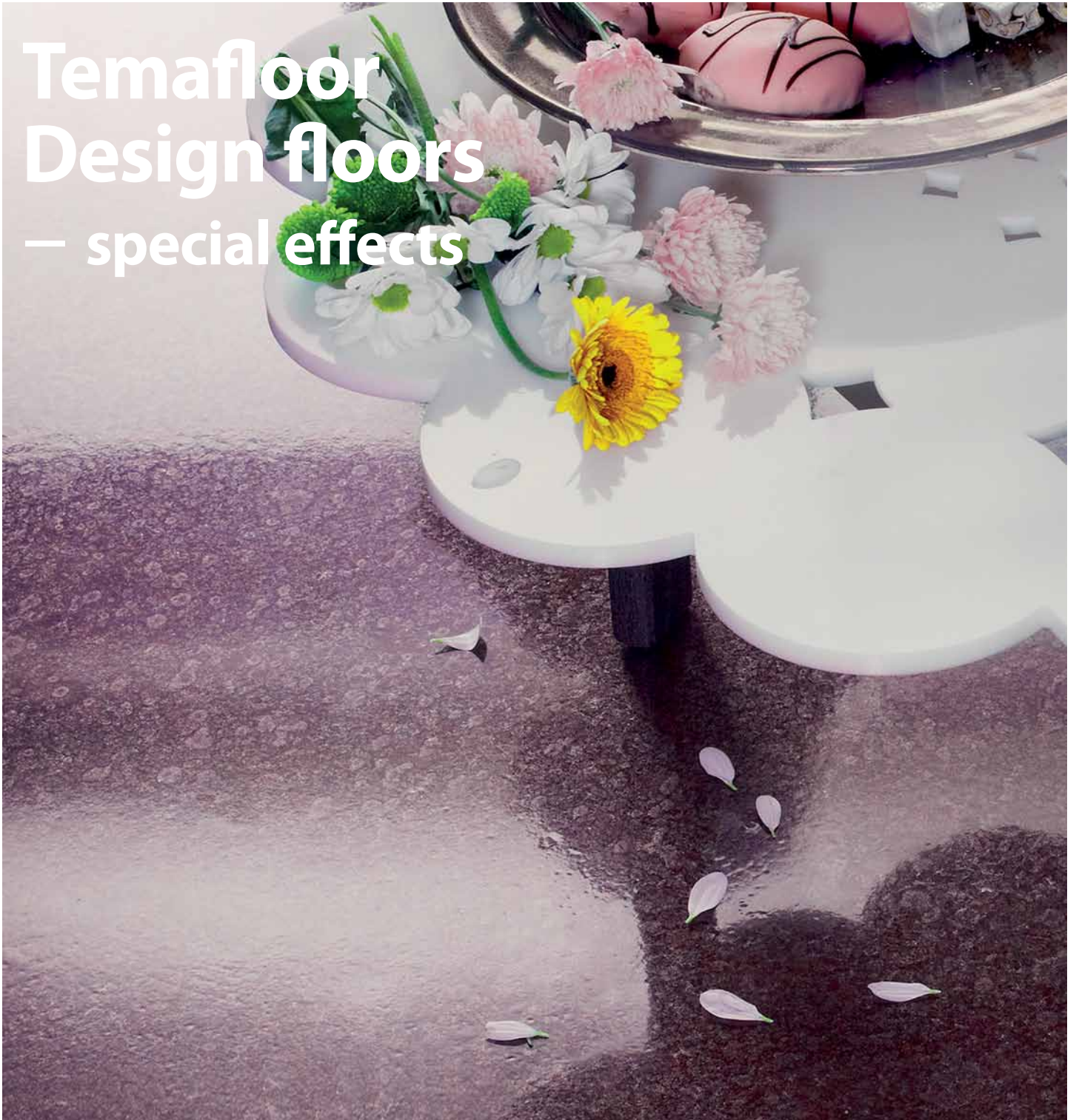
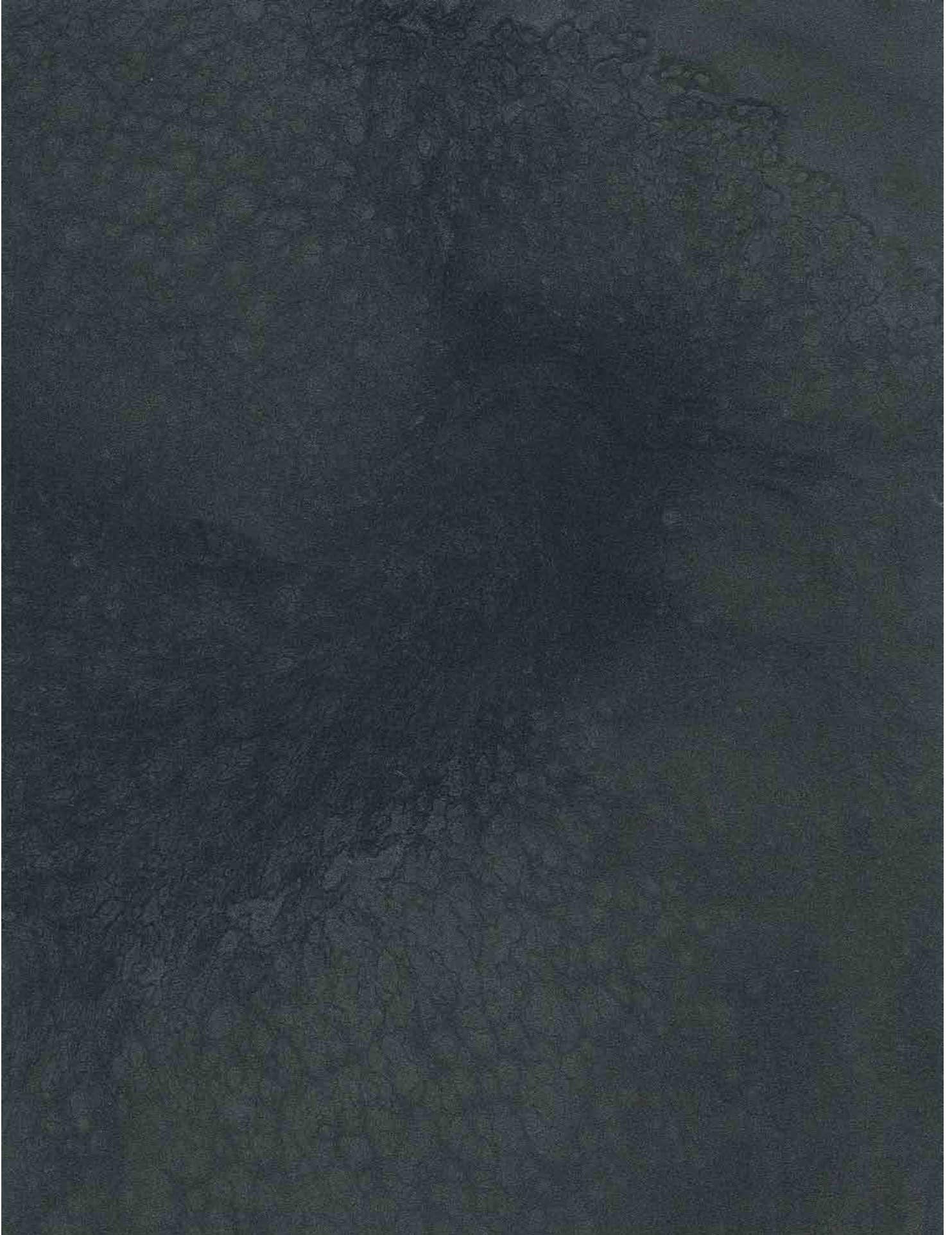


# Temafloor Design floors — special effects

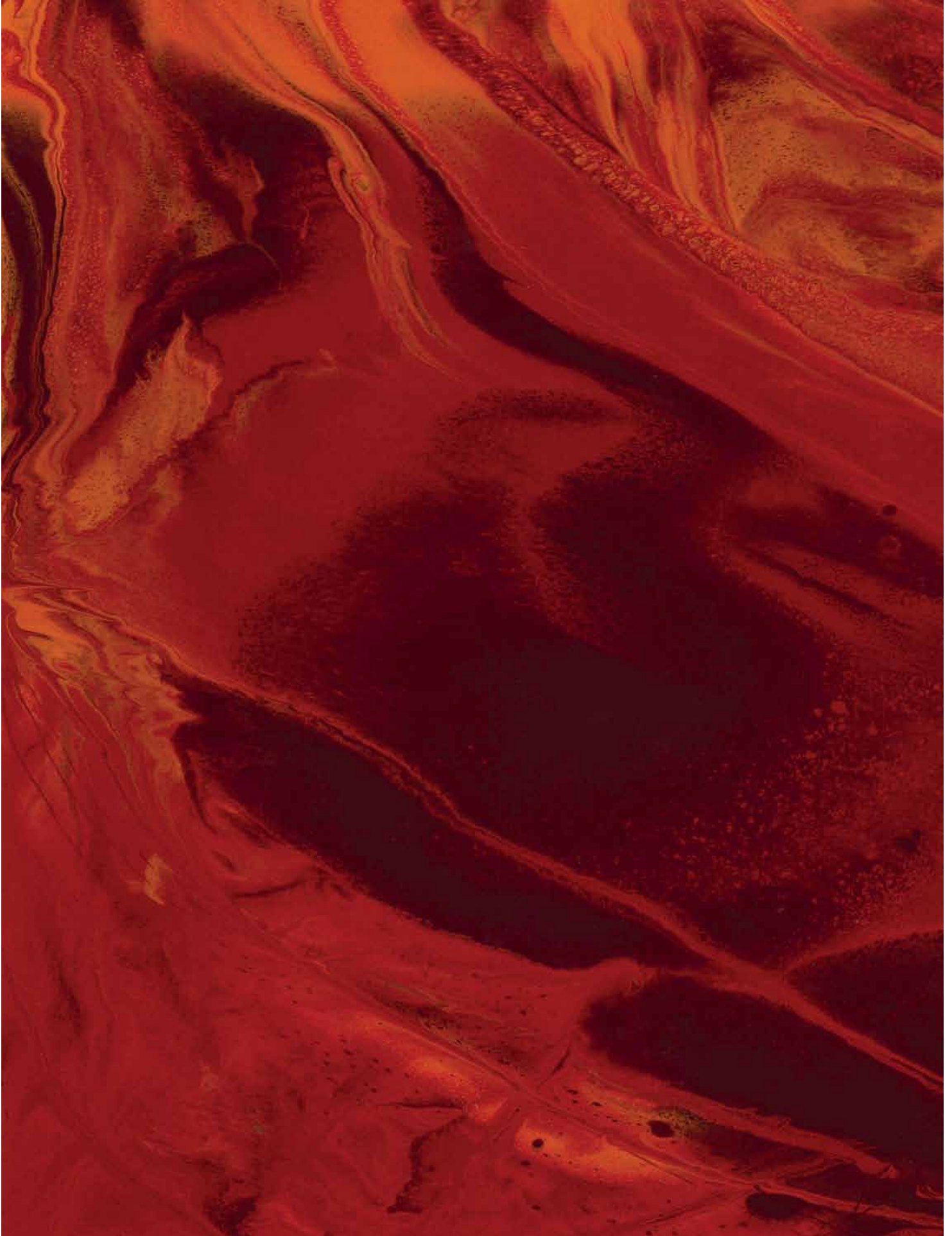


Spatter patterning **Colour:** RAL 840-M



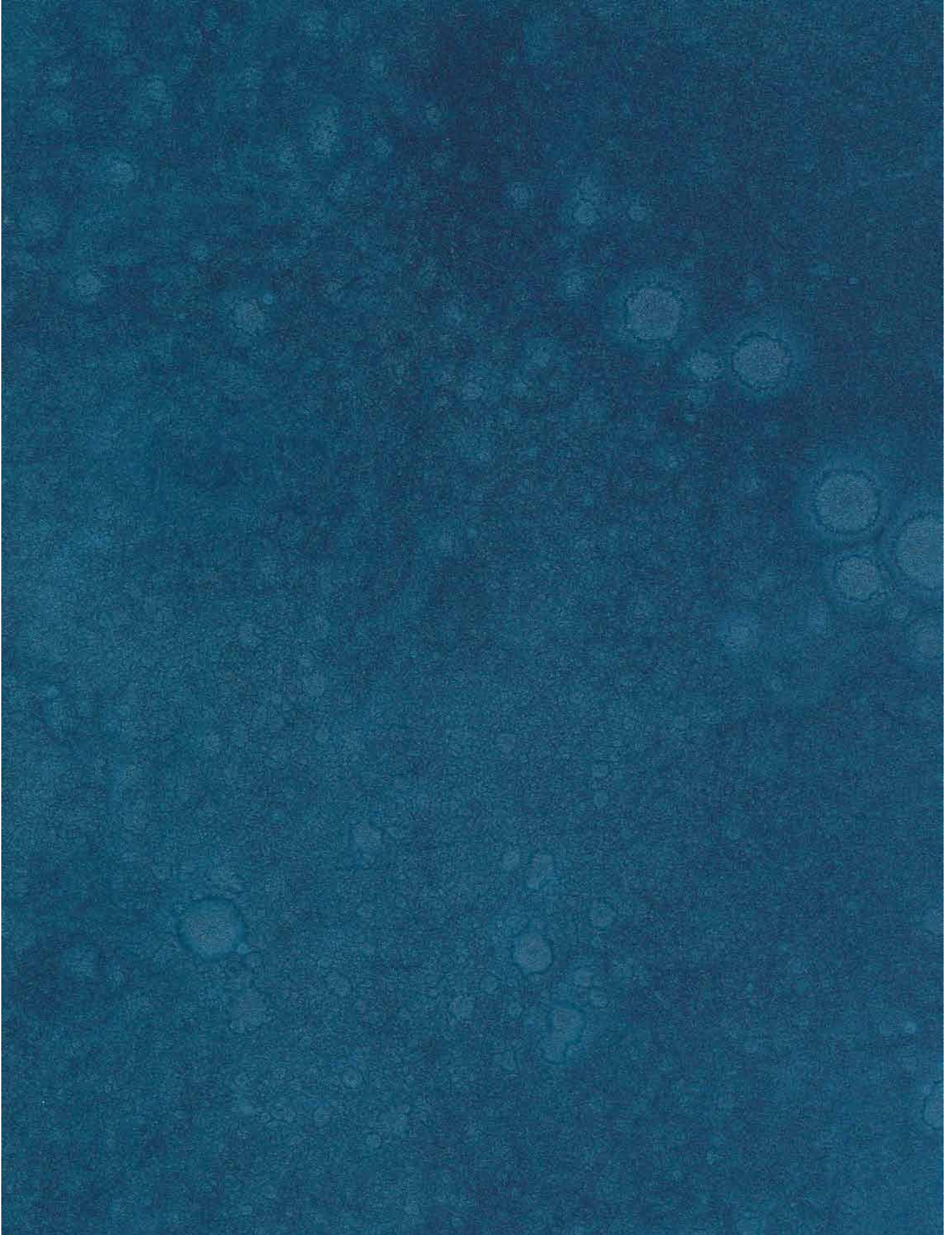
The colour sample are as close to reality as it is technically possible.

Marbling **Colours:** RAL 360-3, RAL 350-4 and RAL 530-5



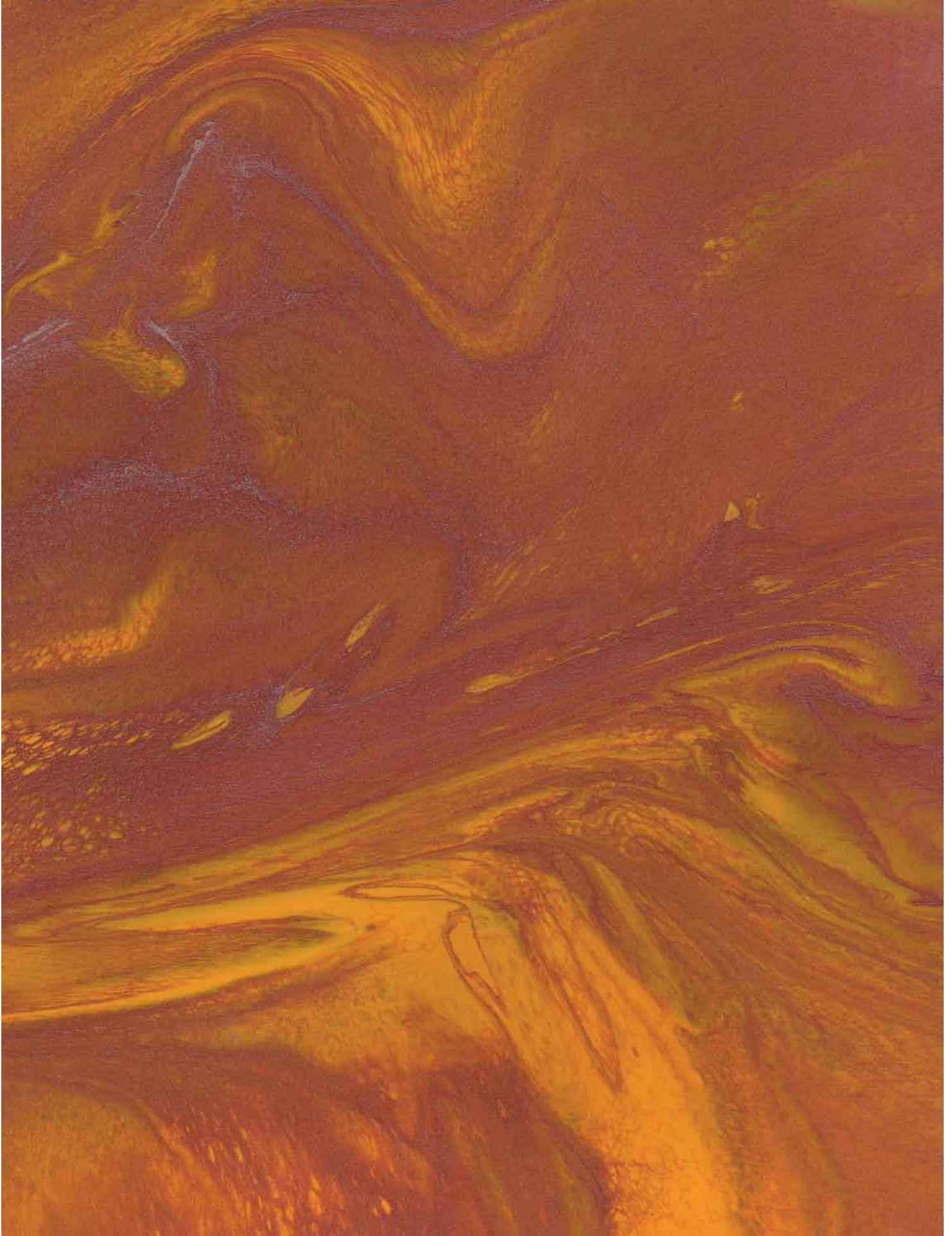
The colour sample are as close to reality as it is technically possible.

Spatter patterning **Colour:** RAL 650-M



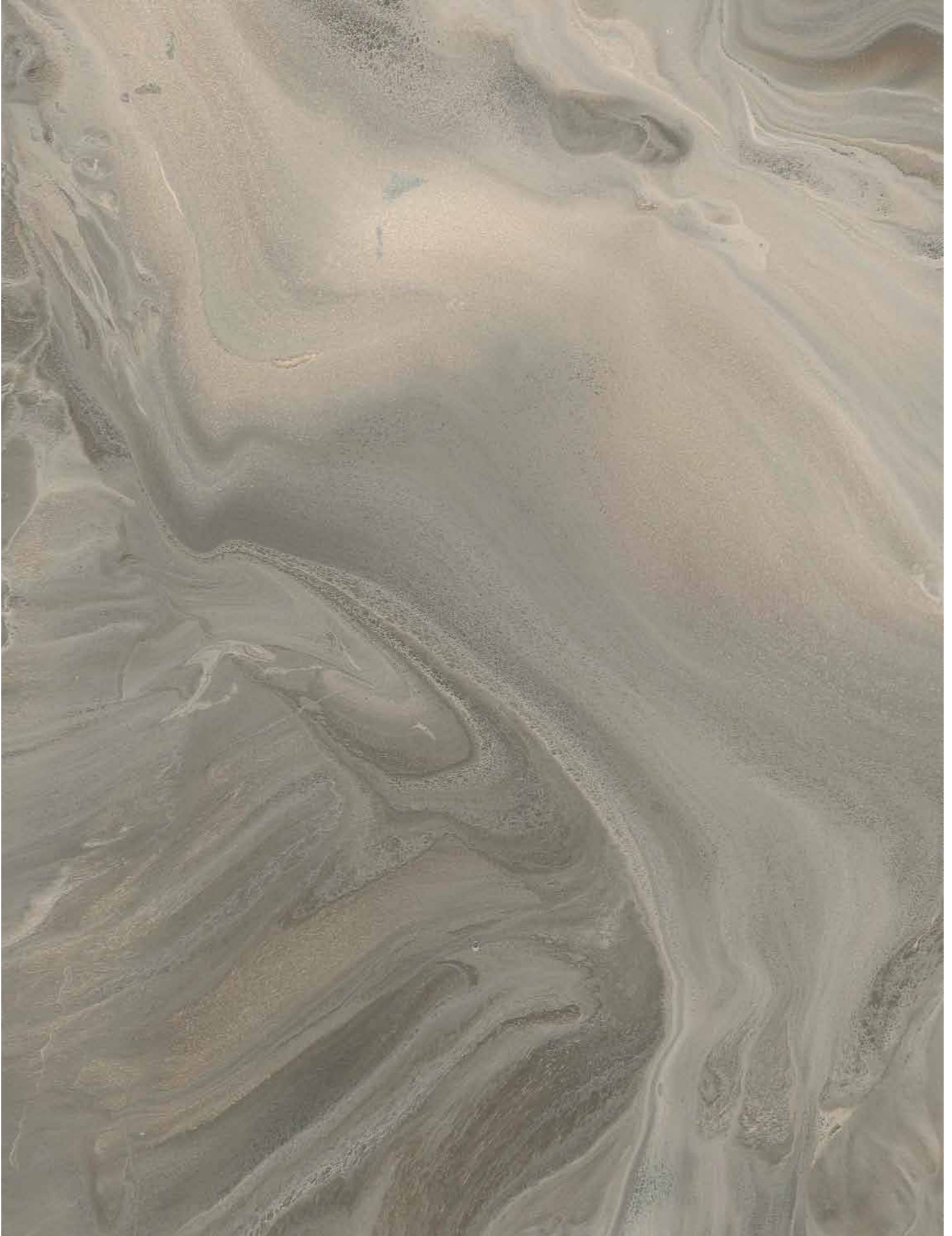
The colour sample are as close to reality as it is technically possible.

Marbling (final light spraying with spatter patterning) **Colours:** RAL 370-5, RAL 390-2 and RAL 350-M



The colour sample are as close to reality as it is technically possible.

Marbling **Colours:** Y395 and S485



The colour sample are as close to reality as it is technically possible.

Marbling **Colours:** RAL 260-4 and RAL 120-5



The colour sample are as close to reality as it is technically possible.

Marbling **Colours:** RAL 120-5 and S485



The colour sample are as close to reality as it is technically possible.



Marbling (final light spraying with spatter patterning) **Colours:** RAL 840-1 and RAL 870-1



The colour sample are as close to reality as it is technically possible.

Marbling (final light spraying with spatter patterning) **Colours:** RAL 370-5, RAL 390-2 and RAL 350-M



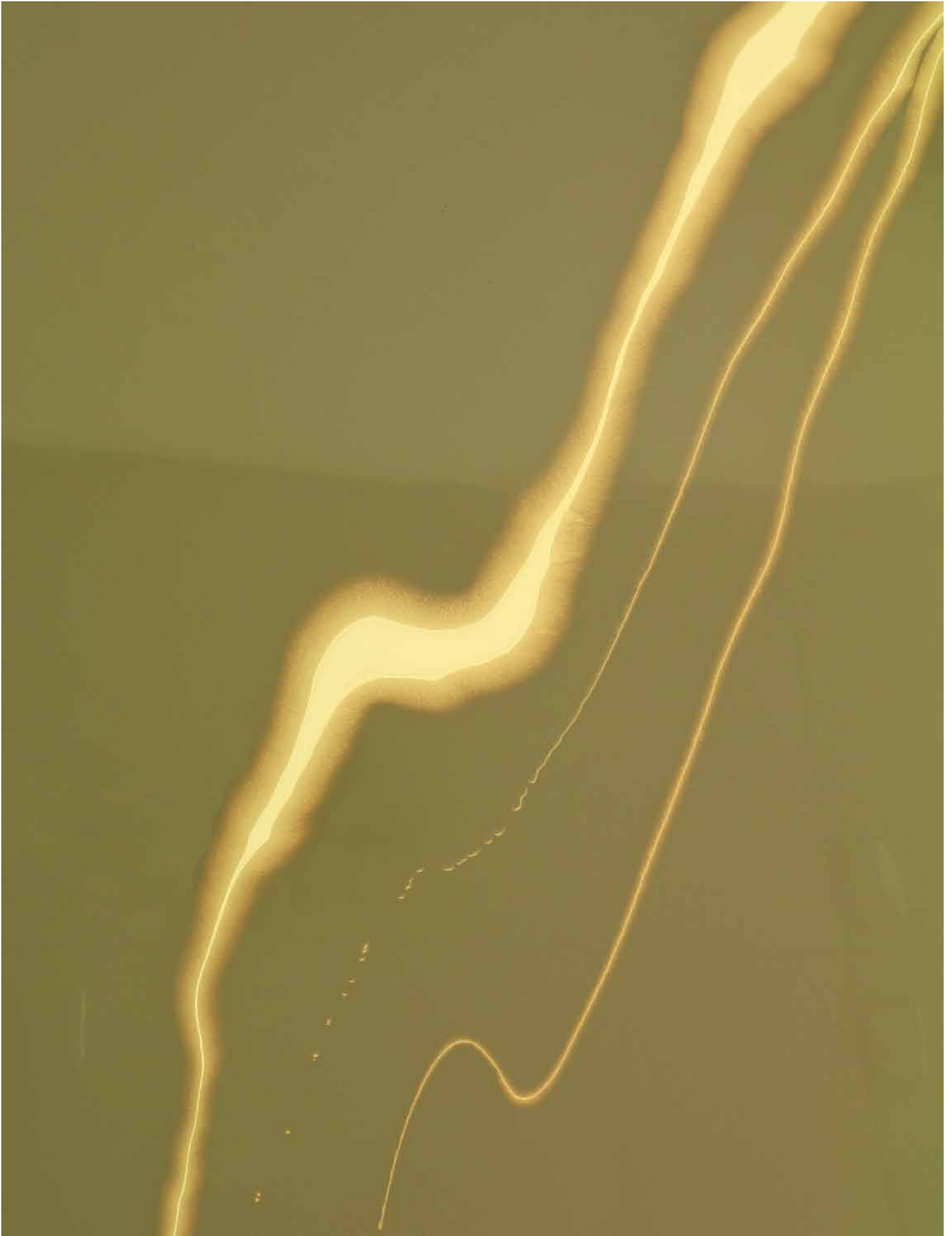
The colour sample are as close to reality as it is technically possible.

Free-hand patterning **Colours:** Y395 (background) and S485 (pattern)



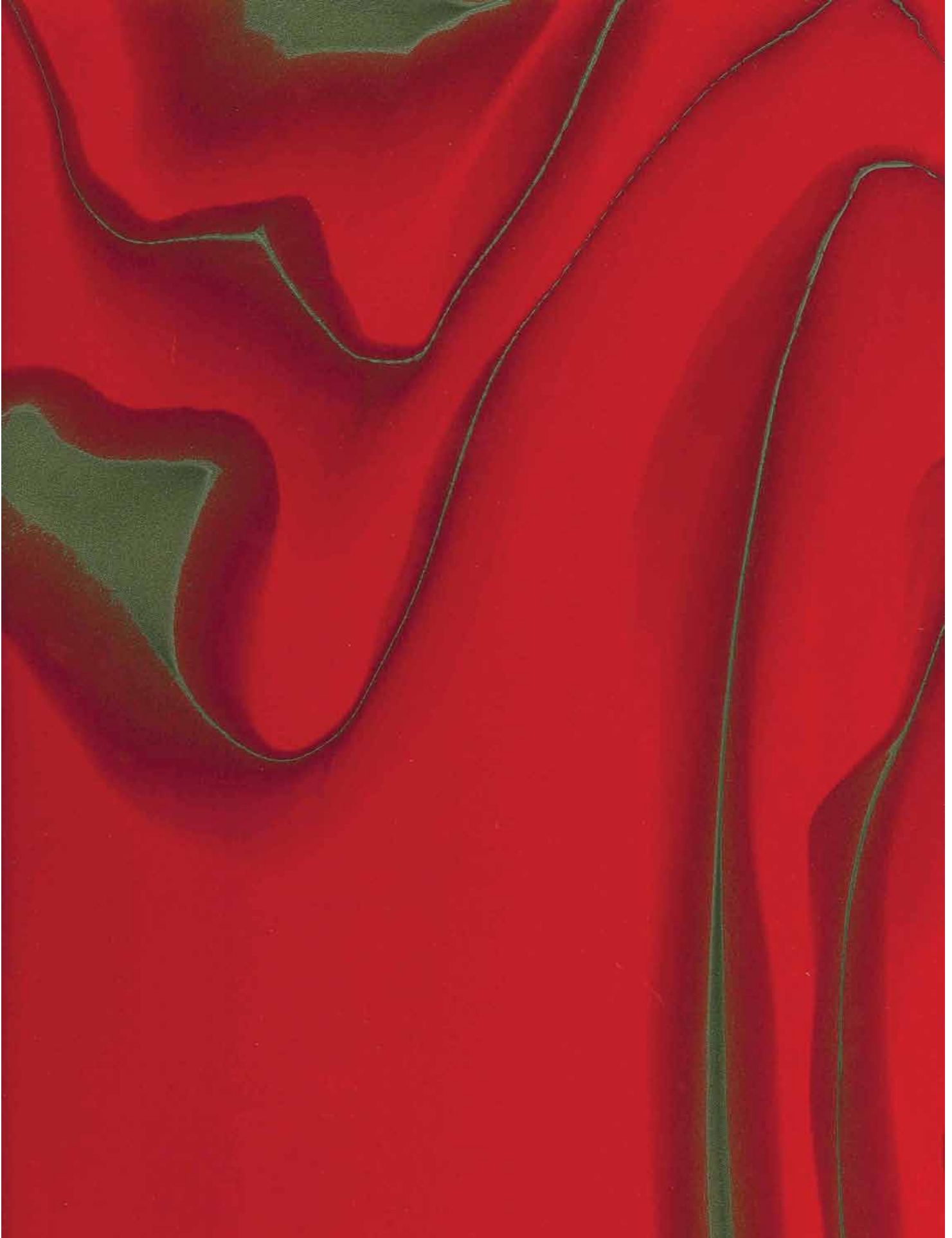
The colour sample are as close to reality as it is technically possible.

Free-hand patterning **Colours:** Y395 (pattern) and S485 (background)



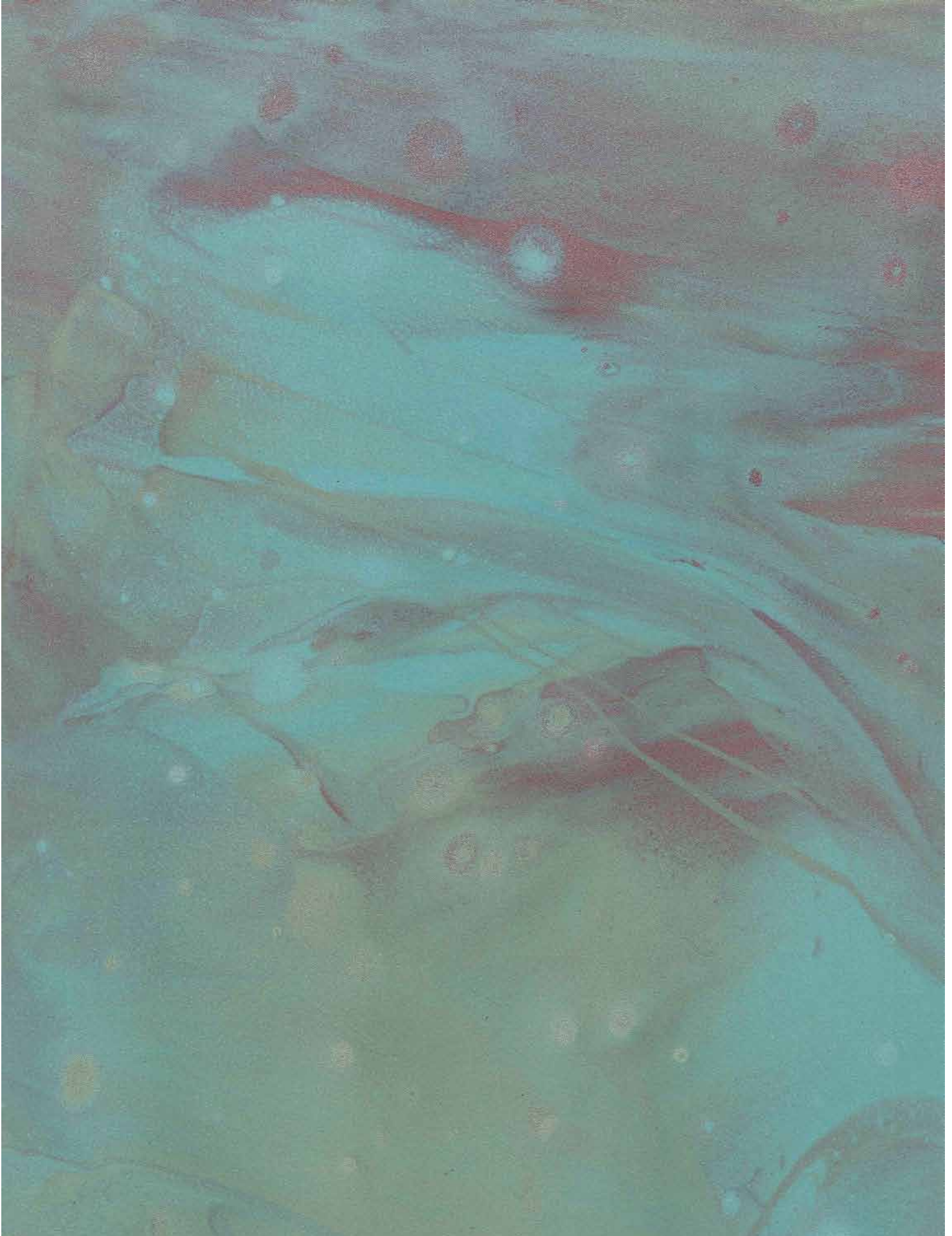
The colour sample are as close to reality as it is technically possible.

Free-hand patterning **Colours:** RAL 440-5 (background) and RAL 270-M (pattern)



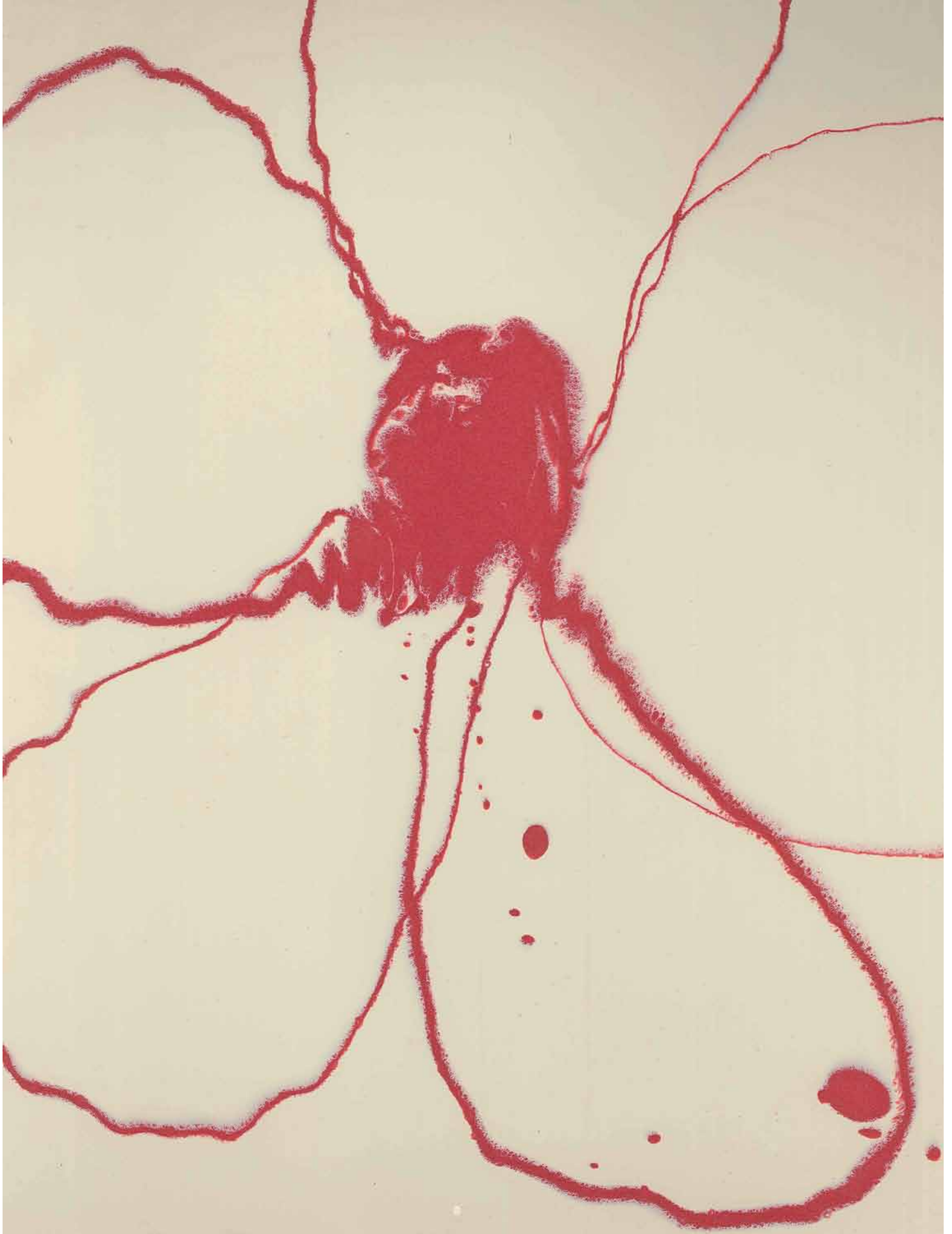
The colour sample are as close to reality as it is technically possible.

Marbling (final light spraying with spatter patterning) **Colours:** RAL 190-M, RAL 210-M and RAL 550-M



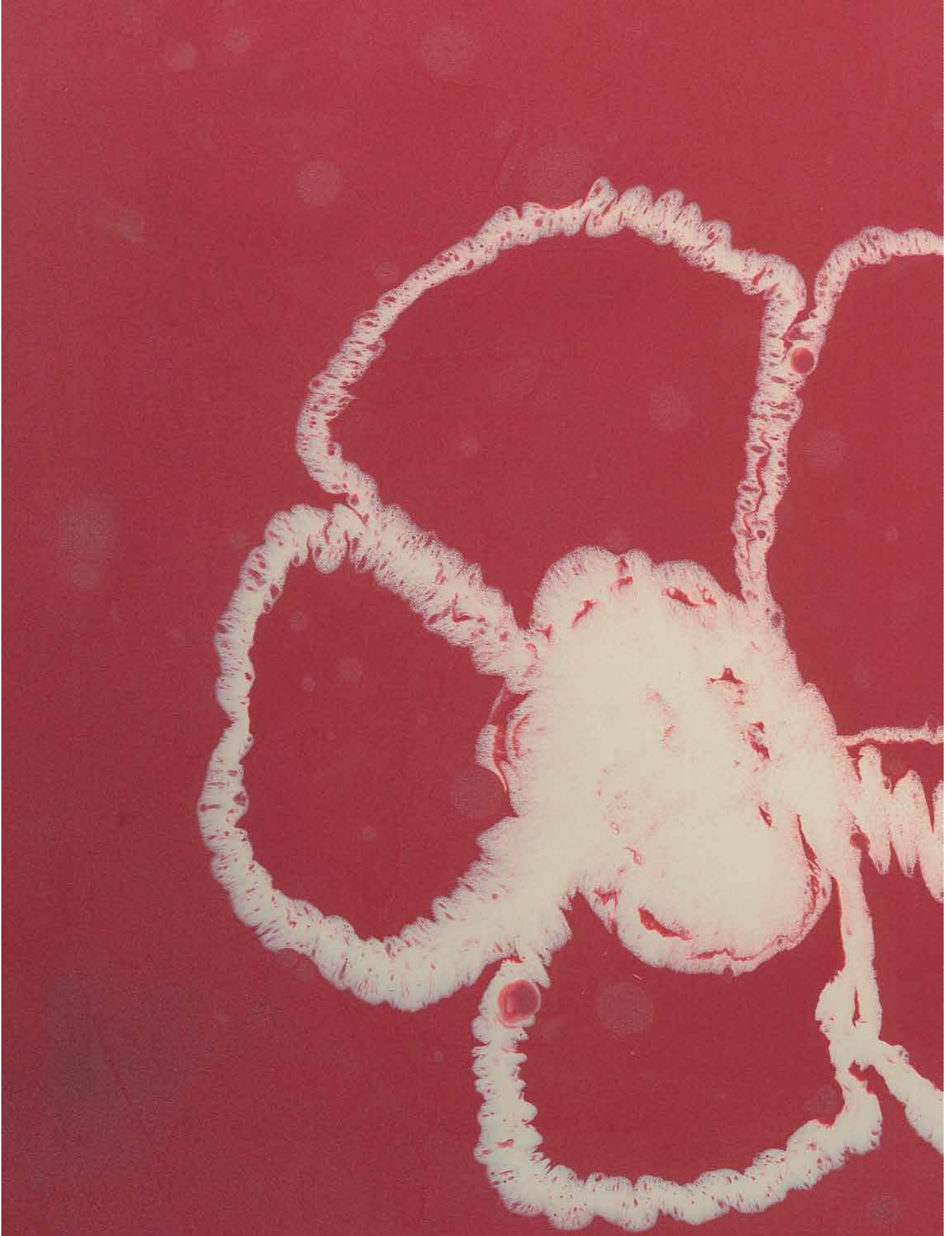
The colour sample are as close to reality as it is technically possible.

Free-hand patterning **Colours:** RAL 470-M and RAL 140-6



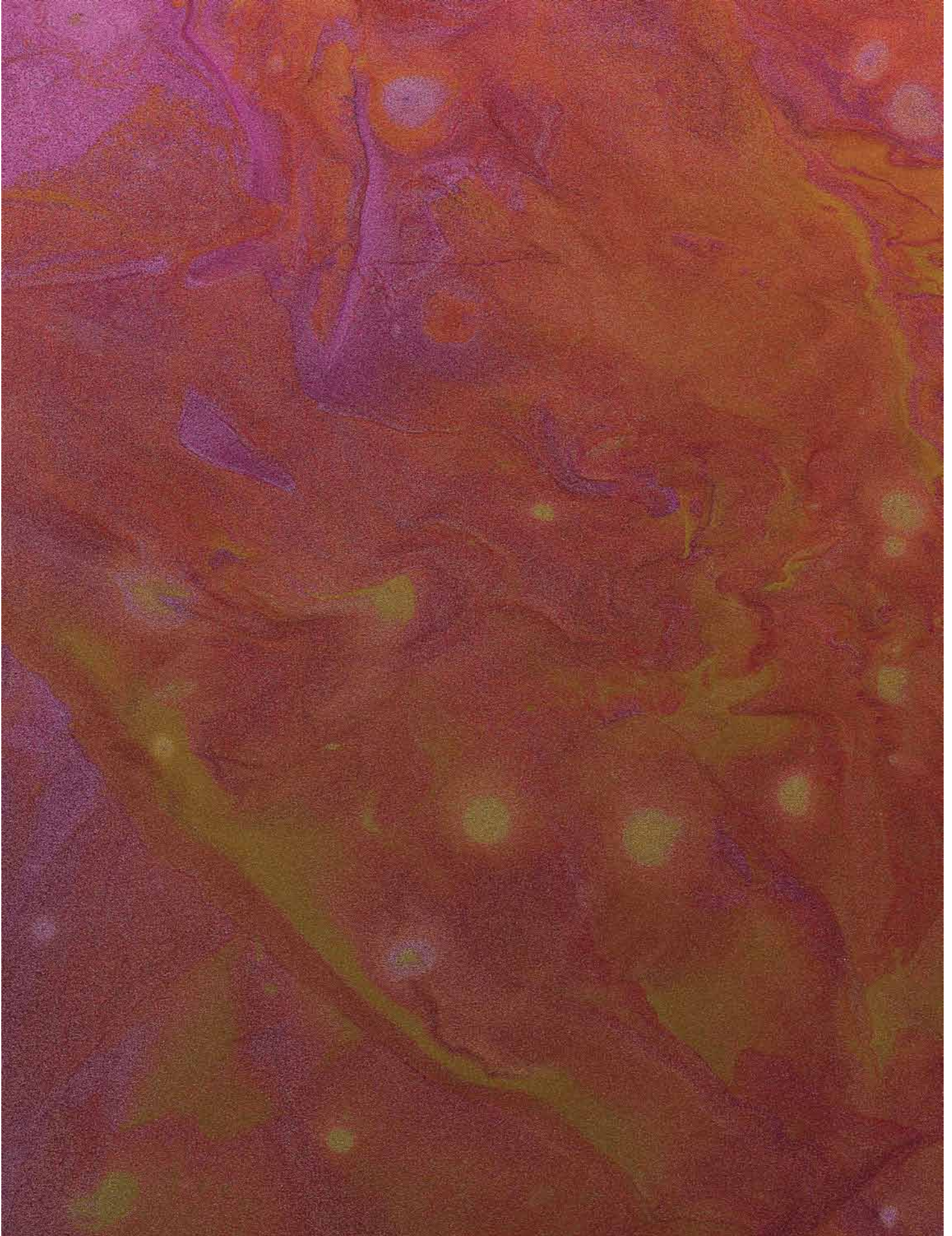
The colour sample are as close to reality as it is technically possible.

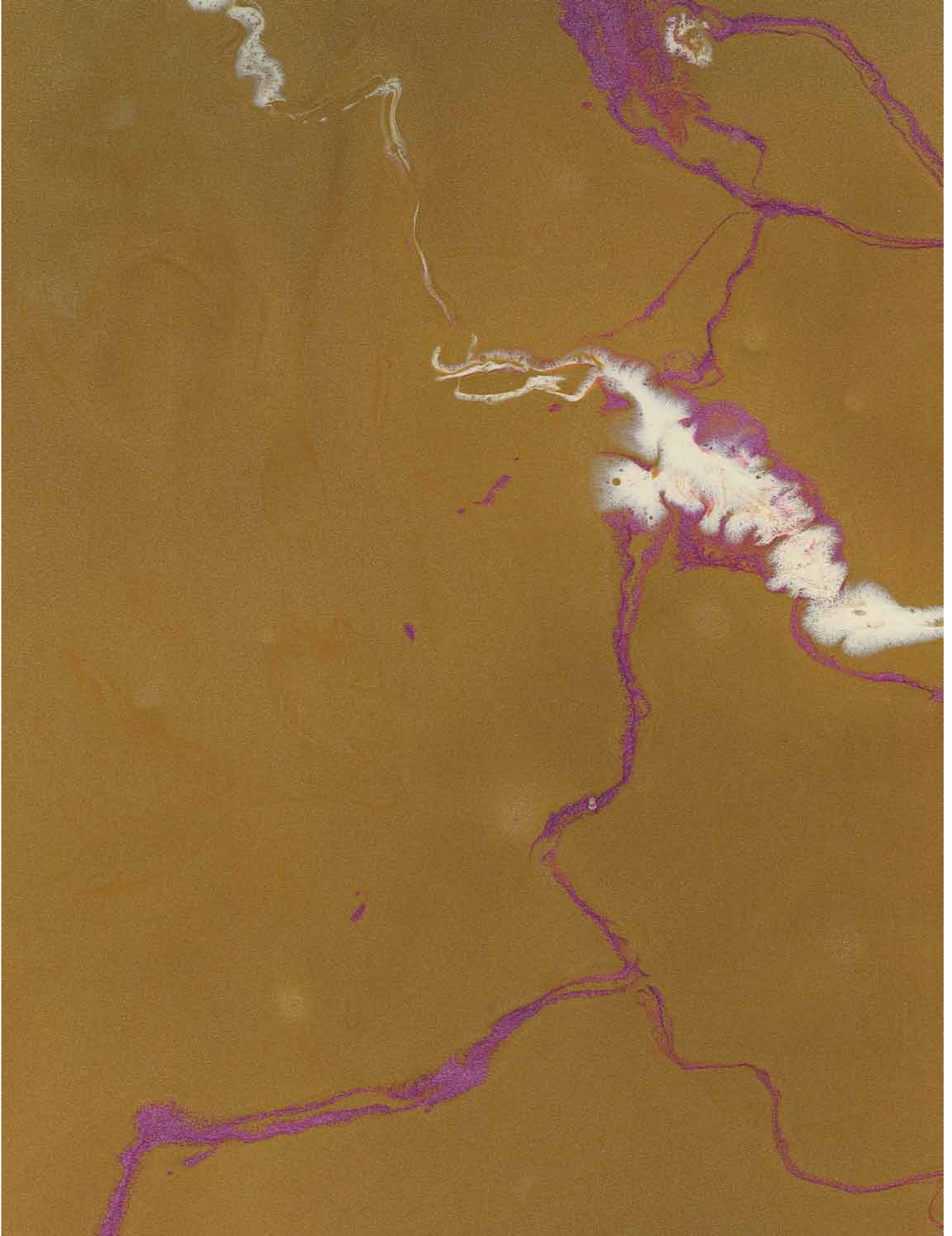
Free-hand patterning **Colours:** RAL 470-M and RAL 140-6



The colour sample are as close to reality as it is technically possible.





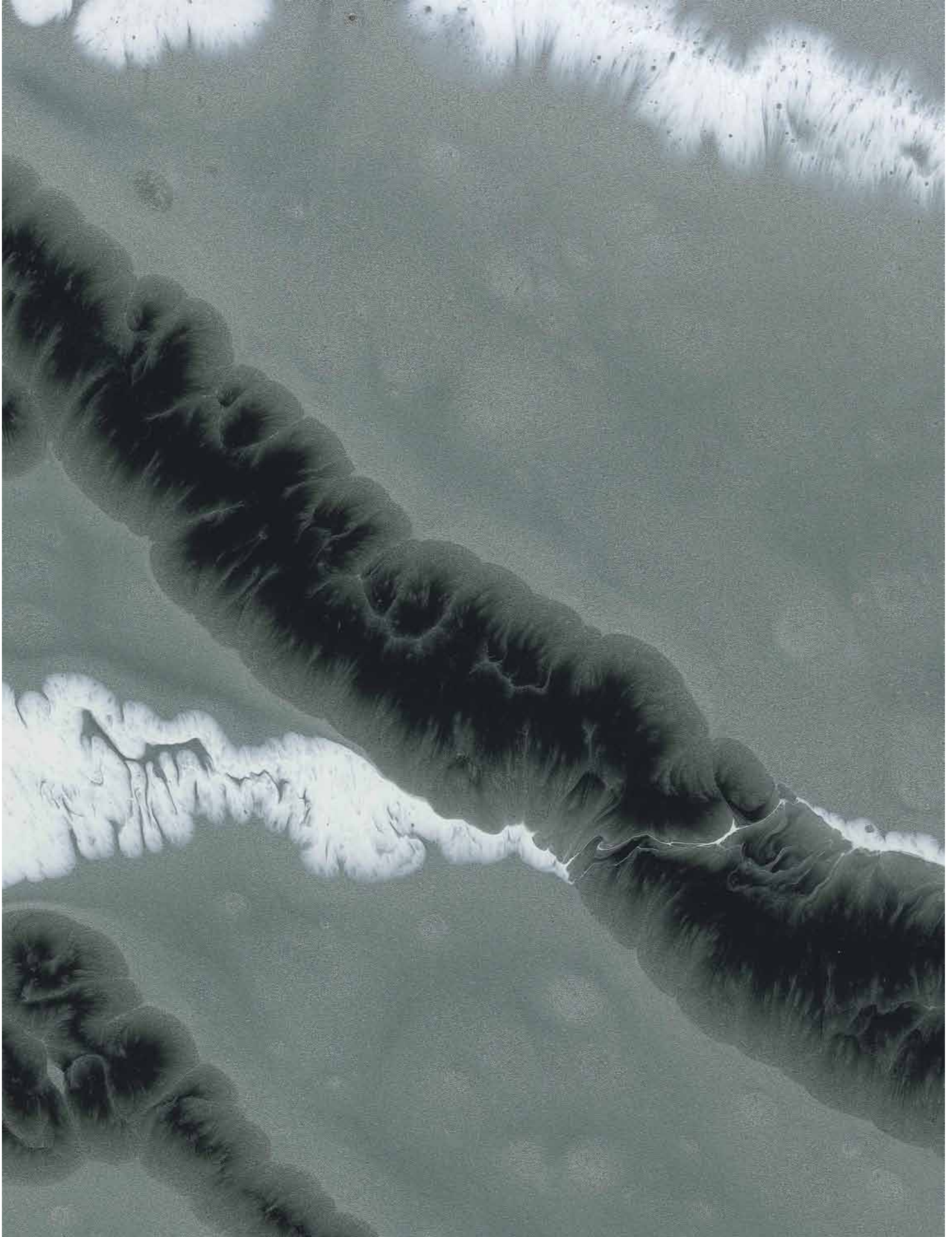


The colour sample are as close to reality as it is technically possible.



The colour sample are as close to reality as it is technically possible.

Free-hand patterning **Colours:** Temafloor P 300 metallic base paint (background) and Temafloor P 300 white and black (patterns)



The colour sample are as close to reality as it is technically possible.



Temaspeed is a first-class service for industrial paint users. Through our Europe-wide distributor network Tikkurila Oyj provides painting professionals with high-quality products, reliable service and fast deliveries. [www.temaspeed.com](http://www.temaspeed.com)



**TIKKURILA**

THE POWER OF COLOURS

Tikkurila Oyj  
P.O. Box 53, FI-01301 Vantaa, Finland  
Telephone +358 9 857 71 | fax +358 9 8577 6911  
[info.coatings@tikkurila.com](mailto:info.coatings@tikkurila.com) | [www.tikkurila.com](http://www.tikkurila.com)